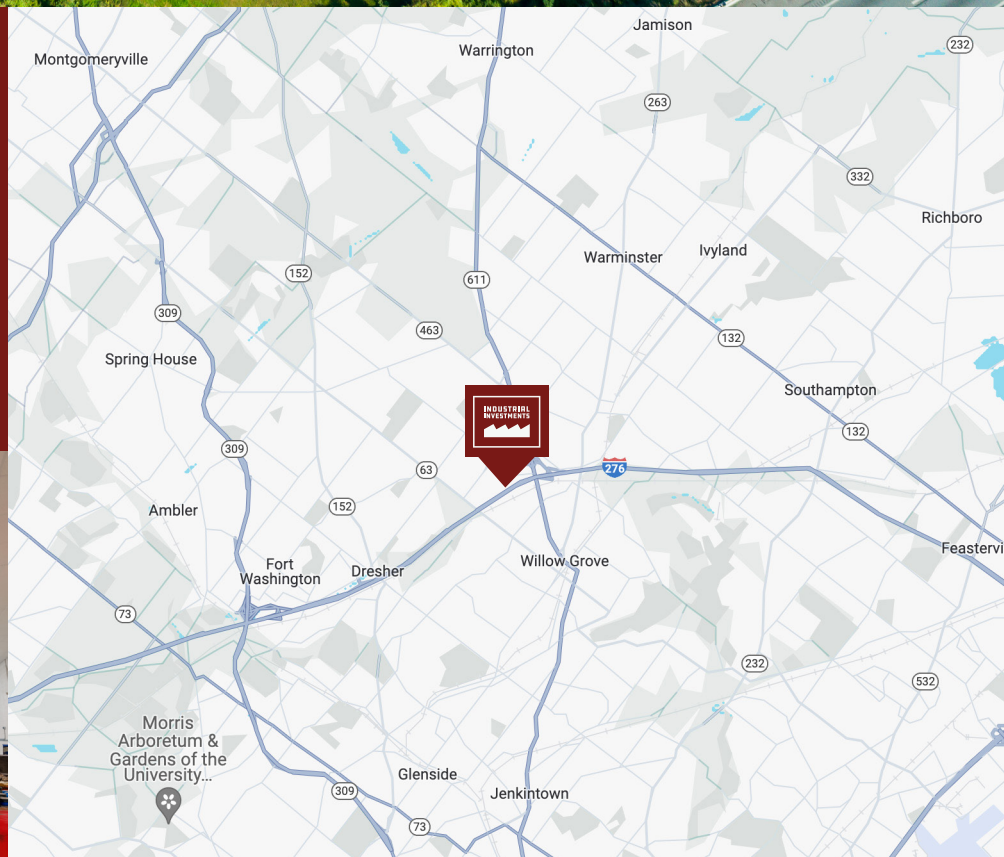


# 2445 - 2465 MARYLAND ROAD WILLOW GROVE, PA 19090

INDUSTRIAL  
INVESTMENTS



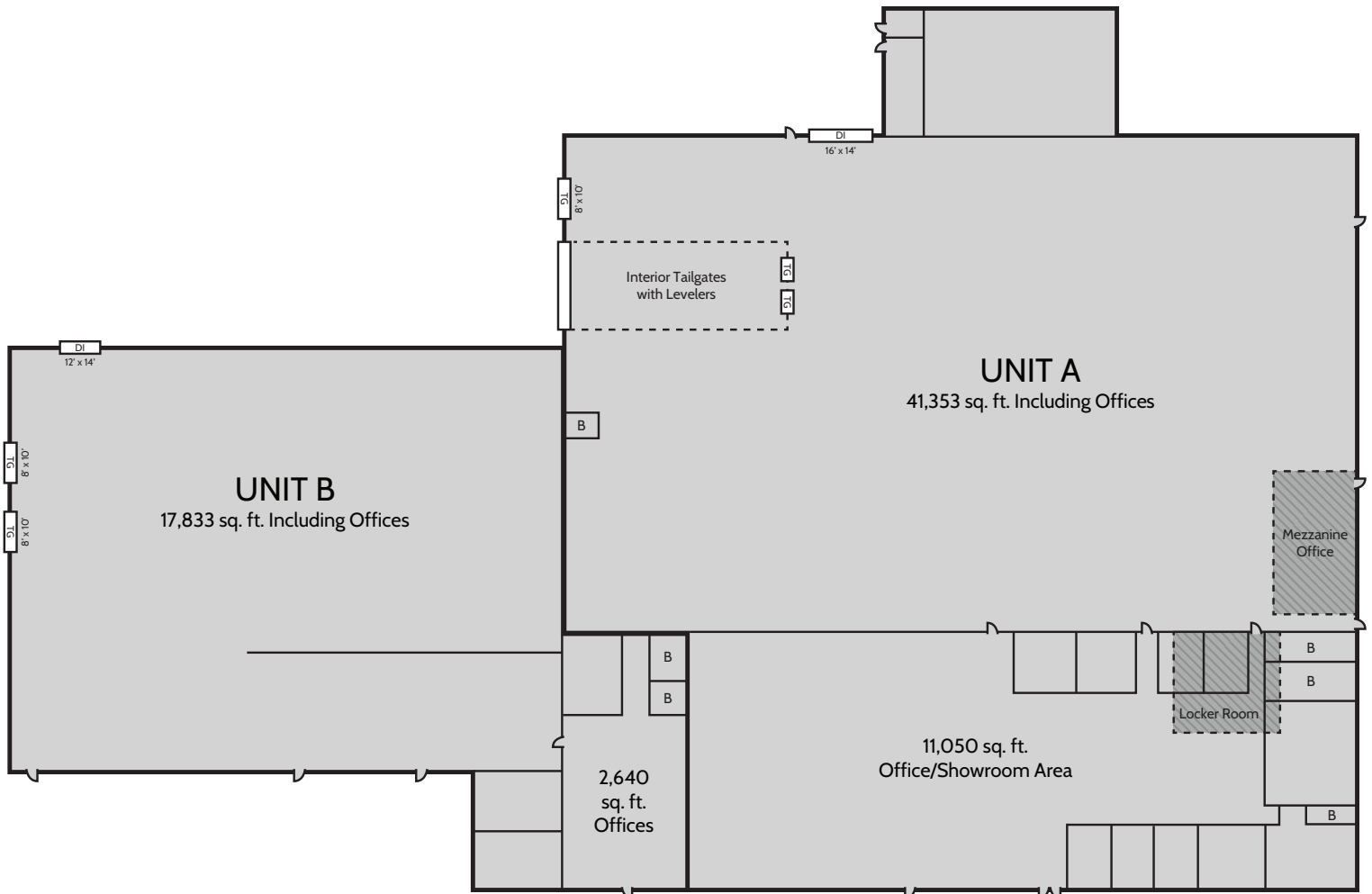
- 59,185 sq. ft. on 6.4 Acres
- Rental Units from 17,760
- Prime PA Turnpike Frontage –  
¼ Mile to Exit 27



FOR MORE INFORMATION: | 215.542.8017 | [INDUSTRIALINVESTMENTS.COM](http://INDUSTRIALINVESTMENTS.COM)



# 2445 - 2465 MARYLAND ROAD WILLOW GROVE, PA 19090



## FEATURES

- Masonry & Steel Construction
- 17' Clear Ceilings
- Gas-Fired Suspended Heaters
- Fluorescent Lighting
- 25' x 20' (A) and 40' x 30' (B) Column Spacing
- Heavy 3-Phase 480 Volt Power
- Tailgate and Drive-In Loading
- Ample Parking
- Public Water and Sewer
- Air-Conditioned Offices to Suit
- Light Industrial Zoning
- Existing Free-Standing Signage